

February 18, 2020

Customer Advisory: Novel Coronavirus Update #3

Dear Customer,

The situation in China is still developing, and we hereby give you the latest update pertaining the coronavirus.

Chinese manufacturing and enterprises remain closed to a large degree, continuing to be postponed opening dates. This keeps export demand from China at extremely low levels, forcing mass-cancellations of sailings by the carriers and departures by the airlines.

Furthermore, the domestic trucking the local authorities have implemented 14 days compulsory quarantine for anyone coming from restricted areas, which is disrupting the transport leading to short supply of trucking services.

This was just a short introduction to the latest news, which you can go into in enclosed.

In line with newly imposed regulations, SGL Greater China have taken necessary precautions to ensure our staff. We are committed to providing excellent services and reducing the impacts to you in this epidemic and disruption.

At last, thanks to "The Swedish Chamber of Commerce in China", who have shared overview and their insights during for the coronavirus. We have selected some the relevant slides on the next pages.

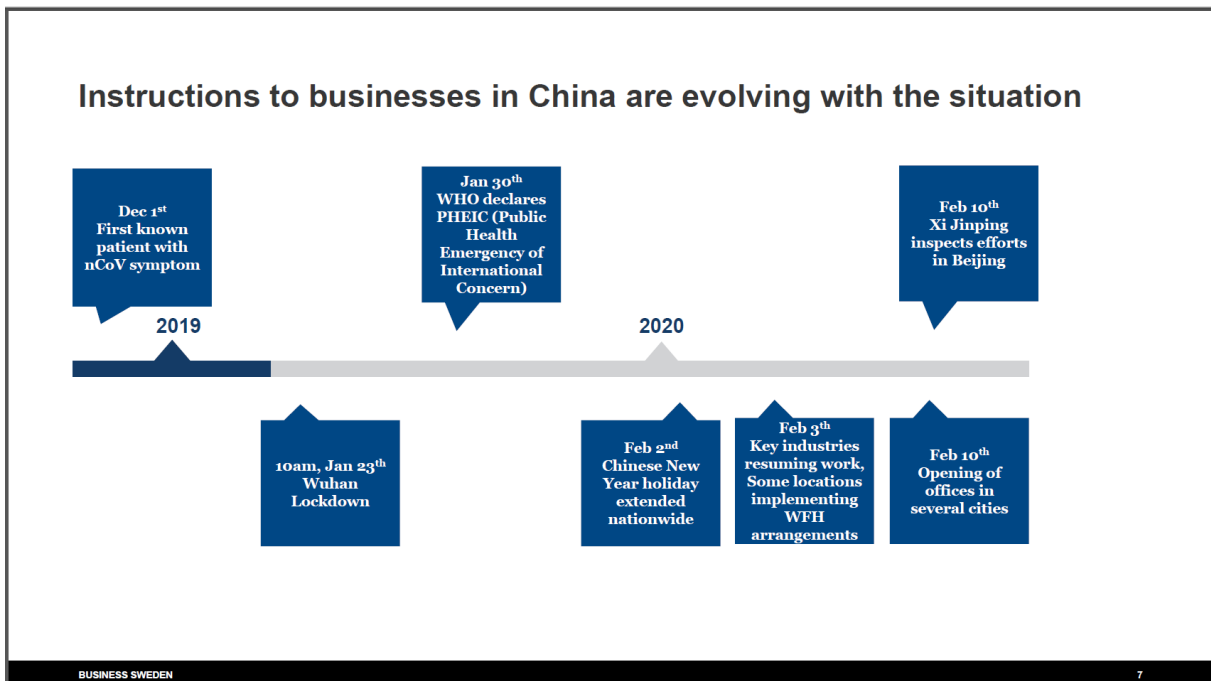
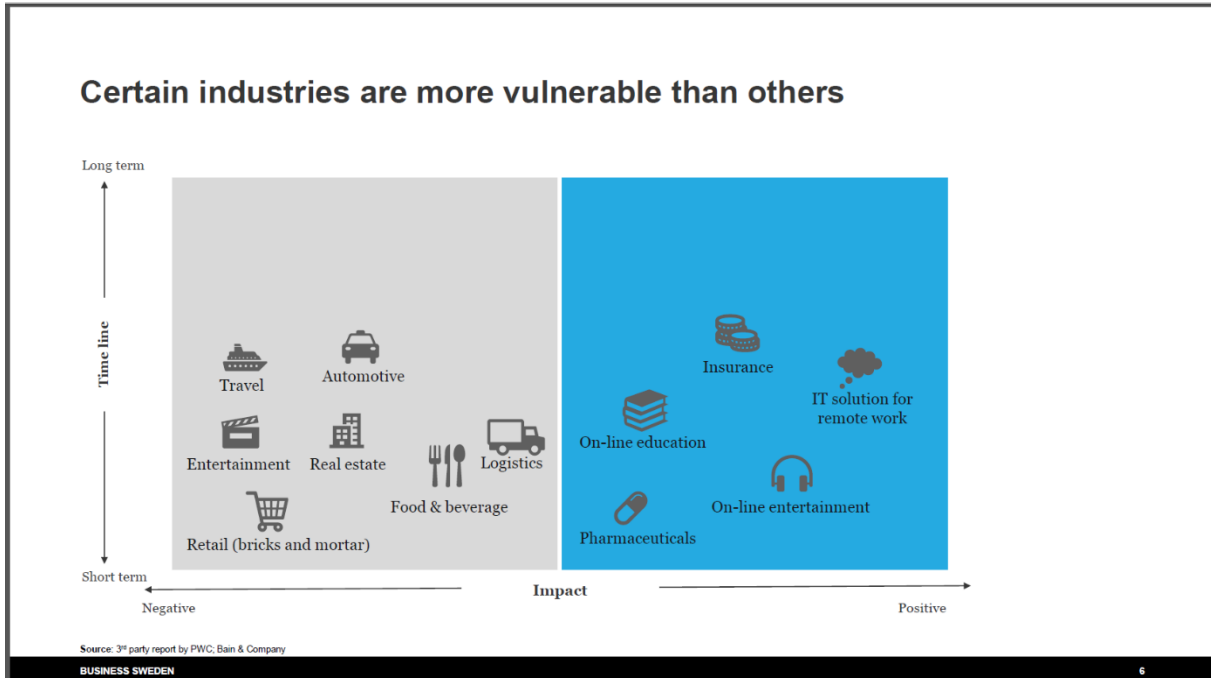
All information is offered to the best of our knowledge and is prone to change.

If you have any questions, please contact your SGL sales representative.





Yours sincerely,

Adam Fong
Scan Global Logistics Ltd.
Greater China Management

Slides from The Swedish Chamber of Commerce in China



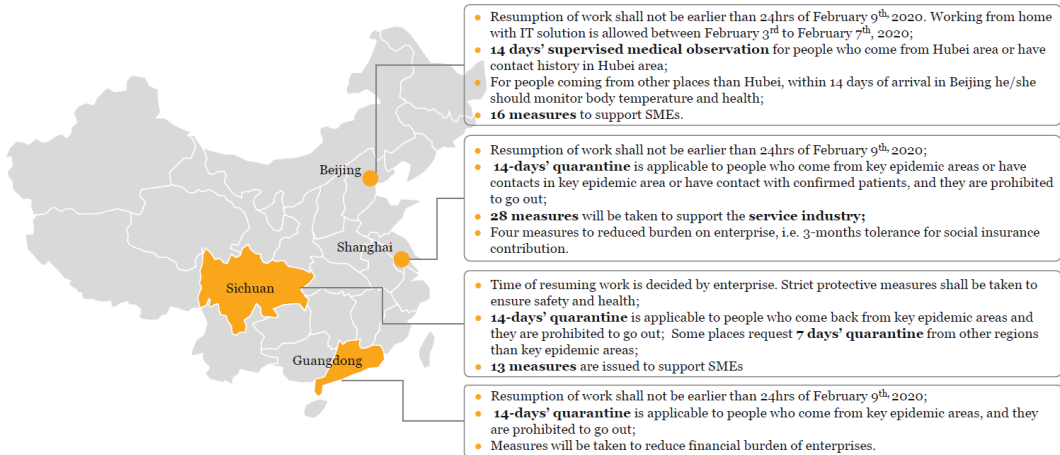
Central government supports areas with low epidemic situation to resume work

 <p>中华人民共和国国家发展和改革委员会 National Development and Reform Commission</p>	 <p>中华人民共和国工业和信息化部 Ministry of Industry and Information Technology</p>	 <p>中华人民共和国商务部 Ministry of Commerce</p>	 <p>中华人民共和国人力资源和社会保障部 Ministry of Human Resources and Social Security</p>
<p>National Development and Reform Commission (NDRC)</p> <ul style="list-style-type: none"> ▶ Areas with severe epidemics: top priority is epidemic prevention and control ▶ Areas where the total epidemic is relatively large but concentrated in individual cities: Strengthen key epidemic prevention and control in these cities, and target low-risk groups to return to work ▶ Areas with relatively light epidemics: Necessary to set reasonable protection standards and strive to achieve full resumption of work as soon as possible 	<p>Ministry of Industry and Information Technology (MIIT)</p> <ul style="list-style-type: none"> ▶ 20 guidelines and measures to fully guarantee the resumption of work of SMEs <ul style="list-style-type: none"> ▶ Fully guarantee the orderly resumption of production ▶ Provide SMEs with financial support ▶ Support SMEs in innovation ▶ Support SMEs with enhanced public services 	<p>Ministry of Commerce (MOFCOM)</p> <ul style="list-style-type: none"> ▶ MOFCOM enhances services to foreign-invested companies <ul style="list-style-type: none"> ▶ Support foreign invested companies to orderly resume normal production ▶ Keep improving business environment 	<p>Ministry of Human Resources and Social Security (MOHRSS)</p> <ul style="list-style-type: none"> ▶ Suggest handling labor issues with flexibility during epidemic prevention and control ▶ Flexible working system to avoid rush hours is suggested ▶ Support employment of SMEs ▶ If a confirmed patient is identified in an enterprise after resumption of work, it is imperative to fully understand the close contacts to the confirmed patient. If the case is detected earlier and strict medical observation measures are taken for close contacts, there is no need to close the enterprise

BUSINESS SWEDEN

8

Local policies and regulations are adapted to the situation



- Resumption of work shall not be earlier than 24hrs of February 9th, 2020. Working from home with IT solution is allowed between February 3rd to February 7th, 2020;
- **14 days' supervised medical observation** for people who come from Hubei area or have contact history in Hubei area;
- For people coming from other places than Hubei, within 14 days of arrival in Beijing he/she should monitor body temperature and health;
- **16 measures** to support SMEs.

- Resumption of work shall not be earlier than 24hrs of February 9th, 2020;
- **14-days' quarantine** is applicable to people who come from key epidemic areas or have contacts in key epidemic area or have contact with confirmed patients, and they are prohibited to go out;
- **28 measures** will be taken to support the **service industry**;
- Four measures to reduced burden on enterprise, i.e. 3-months tolerance for social insurance contribution.

- Time of resuming work is decided by enterprise. Strict protective measures shall be taken to ensure safety and health;
- **14-days' quarantine** is applicable to people who come back from key epidemic areas and they are prohibited to go out; Some places request **7 days' quarantine** from other regions than key epidemic areas;
- **13 measures** are issued to support SMEs

- Resumption of work shall not be earlier than 24hrs of February 9th, 2020;
- **14-days' quarantine** is applicable to people who come from key epidemic areas, and they are prohibited to go out;
- Measures will be taken to reduce financial burden of enterprises.

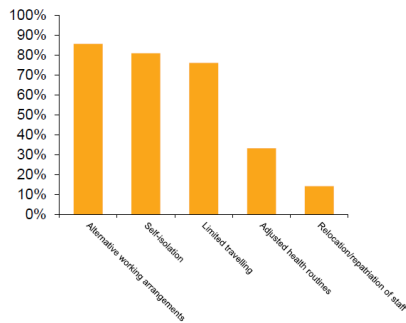
BUSINESS SWEDEN

9

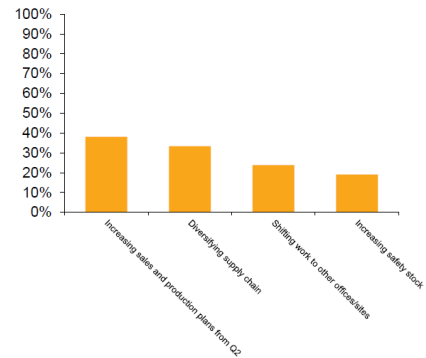
Most companies have implemented measures to deal with health risk, while there are less plans to deal with economic impact



Measures to mitigate health risk (N=21)



Measures to mitigate economic risk (N=21)



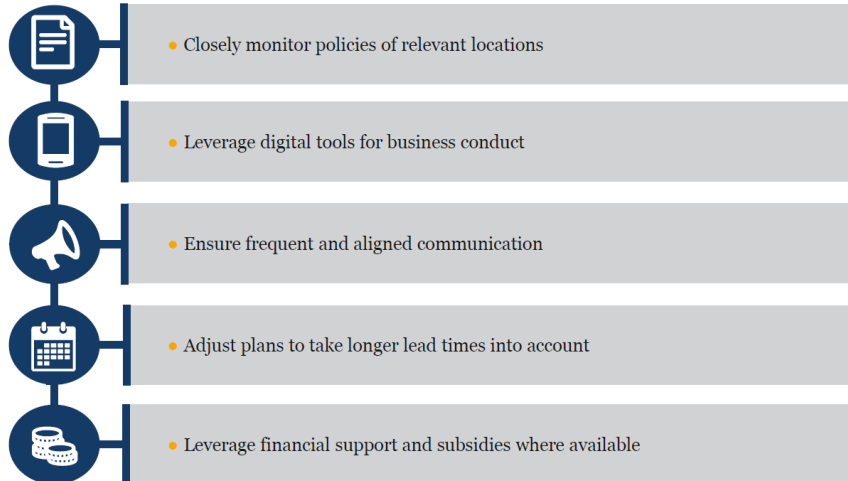
Source: Team Sweden survey

BUSINESS SWEDEN

Survey conducted by
SWEDCHAM.CHINA
中国瑞典商会

11

An active approach towards employees and customers is critical



BUSINESS SWEDEN

13

Air Freight status as of February 16,2020

Coronavirus undermines China’s demand for air cargo despite drastic freight capacity cuts on passenger flights. There will be more than 25,000 fewer flights operated to, from and within China this week compared with two weeks ago, with 30 airlines suspending the services until the end of March.

Great uncertainty exists with regard to how quickly air cargo demand from China will return on a large scale. Nevertheless, we takes all scenarios into consideration and mitigates the potential risks of our customer facing towards; If necessary, we plan to provide a set of charter solution with the schedules between Europe and China (into or out of) as well as United States and China (into or out of).

Airline	Arrangement
Air Canada (AC)	From January 28 to March 27 all flights are cancelled to China.
Air France (AF)	Suspending all flights to Chinese destinations until March 15 apart from Hong Kong. They don't yet have details of how long this suspension is expected to last.
Air New Zealand (NZ)	On February 1 it was announced all Auckland-Shanghai services from February 9 to March 29 were cancelled due to travel restrictions affecting crew and a decline in forward bookings.
American Airlines (AA)	All flights are canceled EX China Mainland until April 24 th
Asiana Airines (OZ)	Most passenger flights to China has been suspended from February 2 to February 29, or if not cancelled, a change to narrow body aircrafts which means a 60% capacity has been pulled-out.
British Airways (BA)	On January 30 all flights were cancelled to mainland China until further notice.
Cathay Pacific Airways (CX)	As of January 30, it was announced they progressively reduced capacity to and from mainland China by 50 per cent or more the end of March.
China Airlines (CI)	A few passenger flights were suspended to Beijing, Xiamen, and Guangzhou. From February 2, all flights between CN and Milan were canceled. For passenger flights, there is a schedule from Shanghai to Paris, Munich, Barcelona and London; scheduled from Beijing passenger flights are still offered to Europe, US and Asia. Freighters to Europe and US out of Shanghai still operates by reduced schedule. CA have scheduled freighter flights ex Shanghai to Chicago, Los Angeles, Amsterdam, Frankfurt, Chicago, New York, Los Angeles, and Dallas.
China Eastern (MU)	From February 3, cancelled flights ex Beijing to Asia, and from February 10, cancelled flights ex Shanghai to EU and from February 3, cancelled flights ex Shanghai to AU, and as of Mar 8 flights to Auckland will be cancelled. The resume date is not yet confirmed. Cancelled flights ex Shanghai to New York, San Francisco and Los Angeles from February 2. Will resume on April 25. Cancelled flights from Fuzhou to New York from February 10 to March 28. Cancelled flights from Chengdu to Los Angeles from February 4 to June 18.

	Cancelled flights from Qingdao to San Francisco from February 4. Cancelled flights from Nanjing to Chicago from February 13 to June 18. CK have scheduled freighter flights ex Shanghai to Chicago, Los Angeles, Amsterdam, Frankfurt, Bangkok, Singapore, Tokyo, Osaka, Seoul, Hong Kong and Taipei.
China Southern (CZ)	Passenger flights cancelled from Beijing to Istanbul from February 6 to February 29. Only day 2/3/5/7 from Beijing to Amsterdam. Ex Guangzhou, passenger flight will be on day 1/4/6 to Amsterdam, day 1/3/5/7 to Los Angeles, day 1/3/6/7 to Vancouver and day 2/4/6 to New York. Ex Shanghai, CZ operates scheduled cargo flights to Frankfurt, Amsterdam, Chicago, Los Angeles.
Delta Air Lines (DL)	5% stake in China Eastern, has now cancelled all flights to Mainland China until April 30.
El Al Israel Airlines (LY)	On January 30 it was announced all flights to Beijing were suspended until March 25. Israel's Health Ministry stated it will not allow flights from China to land at its airports.
Emirates (EK)	Passenger flights to Shanghai operating as normal except the departures scheduled on Tuesday and Friday departures. All Cargo flights cancelled Passenger flights to Beijing operating as normal.
Ethiopian Airlines (ET)	As of January 30, individual flights cancelled to Beijing, Shanghai, and Guangzhou.
Etihad Airways (EY)	Passenger flights between Abu Dhabi and Shanghai, temporarily suspended due to low travel demand until February 29. Beijing route as per normal schedule
Eva Air (BR)	Suspended few passenger flights to Beijing and Xiamen, but aircraft change to narrow body.
Finnair (AY)	Ceased flying to Mainland China with immediate effect, with a view to resuming service after February 29.
Hainan Airlines (HU)	Suspended all flights between Budapest, Hungary, and Chongqing from February 7 until March 27. Now ex Beijing, there is only passenger flight to Brussels, Toronto, Lisbon Canceled flight from Shanghai to Seattle and Boston from February 3 to March 1.
Hong Kong Airlines (HX)	Reduced to one flight to Beijing and Shanghai, and the use of narrow body aircraft means a 90% capacity drop.
Japan Airlines (JL)	The attempt was to continue as business as usual but has been forced to cut back flights due to the reduced demand. Will suspend its flights between NRT and PEK from February 17 through March 28.
Kenya Airways (KQ)	As of January 31, all flights to China were suspended until further notice.
KLM (KL)	Cutting its number of flights to Chinese destinations due to a drop in bookings.

Korean Air (KE)	Most passenger flights are suspended from February 2 to 29, which means a 40% capacity drop. The freighter operating from Tianjin and Dalian schedule still remain unchanged.
Lufthansa (LH)	On January 29, all flights on Lufthansa, Swiss and Austrian Airlines were suspended to and from China mainland until the end of winter timetable on March 28. The freight capacity is reduced to 1-2 freighters to Beijing or Shanghai per week. To and from Hong Kong, slight capacity adjustments will be made: For Lufthansa, some flights will be cancelled, SWISS will be using smaller aircrafts on its flights to and from Hong Kong in March.
All Nippon Airways (NH)	Half of the passenger flights to Shanghai and Beijing have been suspended, just 1-2 freighters remaining to Dalian, Qingdao, Tianjin and Hong Kong, which leaves an approx. 80% capacity drop
Malaysia airlines (MH)	Plan to cancel flights to Beijing, Xiamen and Guangzhou from February 22 until further notice, individual passenger flight to Shanghai still remains, Freighters to Shanghai are operating as normal.
Philippines Airlines (PR)	All flights between Manila and China are cancelled in February
Polar Air (PO)	Flights ex Shenzhen to CVG Cincinnati were cancelled from February 1; The flight ex Shanghai to Los Angeles and CVG Cincinnati were cancelled from February 11.
Polish Airlines (LO)	All flights suspended from February 2 to February 29 to Beijing
Qantas Airways (QF)	Suspended whole passenger flights to Beijing and Shanghai February 9~29.
Qatar Airways (QR)	All passenger flights are cancelled and freighters to Guangzhou have decreased from 5 to 3 freighters to Shanghai.
Scandinavian Airlines (SK)	On January 30 all flights to and from Shanghai and Beijing were suspended until March 29. SAS usually offers 12 regular weekly connections from and to Shanghai and Beijing.
Shanghai Airlines (FM)	On January 31 all flights were suspend from Chengdu to Budapest between February 4 until March 28 and the flights from Xi' to Budapest between February 6 and March 26.
Singapore Airlines (SQ)	Stopped flying to PEK, CAN and PVG. The suspension of service is planned to last until March 1.
Thai Airways (TG)	As of February 10, the plan is to operate one flight per day which means a 50% capacity drop
Turkish Airlines (TK)	On January 30 it was announced the capacity would decrease and the frequency on scheduled flights to Beijing, Guangzhou, Shanghai and Xian between February 5-29. Except temporary freighter on February 8, 13, 14, 15 and 16 to Guangzhou

United Airlines (UA)	Last flights out of mainland China departed February 5, and the suspension period is running through March 28. United suspended 24 US flights to Beijing, Hong Kong and Shanghai between February 1 and 8 because of a significant drop in demand.
United Parcel Service (UPS)	22 flights from China have been cancelled as a result of the Wuhan quarantines and normal manufacturing closures due to the Lunar New Year holiday.
Vietnam Airlines (VN)	Suspended all flights to destinations in China from February 2 until further notice.
Virgin Atlantic (VS)	All daily operations to Shanghai were suspended until March 28.

Ocean Freight status of February 16, 2020

The Coronavirus situation is developing daily, and we are now at a point where the container shipping industry is feeling a sharp impact, and furthermore cargo owners everywhere are about to experience significant problems for the coming months.

Within a short span of time, carriers have blanked an additional 31 sailings across Transpacific (21) and Asia-Europe (10). This is a sharp and severe indication of the disruption in demand flows from the Coronavirus.

The raft of new blank sailings is likely to cause capacity issues for back-haul shippers in Europe and North America in March and April. They need to start preparing for this situation as well as for a possible spike in freight rates.

The Coronavirus has caused widespread schedule changes on Asia-Europe and Transpacific in the past week. 44.2% of the Asia-NAEC products have seen schedule changes in Asia, in the past week. In terms of individual carrier alliances, THE Alliance is seeing significant delays on Asia-Europe and Asia-NAEC, while 2M are seeing delays on Asia-NAWC.

District	Stakeholder	Resumption date	Condition as of February 16 th
Shanghai & Yangzi River port	Terminal	24 hours daily operation	Running as per normal schedule. Congestion of reefer containers at the terminal and a congestion surcharge is introduced.
	Carrier	February 10	Booking process can be placed as per standard procedures, but more carriers are implementing blank sailings with short notice.
	Trucker	February 10	Some highways or town roads have been locked down or requires local pass permission to be able to pass the intended route. 100% inspection ratio and sudden roadblocks implemented by the authorities when crossing the provinces/towns/cities may affect reaching the cargo cut-off/terminal cut-off. 2 days advance booking is required. Container loading or cargo pickup need road permission applied by the shippers.
	Warehouse	February 10	Working hour: 9am – 5 pm
	China Customs	February 3	Operation hours as normal.
Dalian	Terminal	24 hours daily operation	Operation hours as normal.
	Carrier	February 3	Bookings process as normal but more carriers are implementing blank sailings with a short notice.
	Trucker	February 3	One day advance booking is required.
	Warehouse	February 3	Working hour: 9 am-4 pm.
	China Customs	February 3	Operation hours as normal.
Tianjin	Terminal	24 hours daily operation	Running as per normal schedule. Congestion of reefer containers at the terminal and a congestion surcharge is introduced.
	Carrier	February 3	Booking process can be placed as per standard procedures, but more carriers are implementing blank sailings with short notice.
	Trucker	February 3	100% inspection ratio when crossing the provinces/towns/cities may affect reaching the cargo cut-off/terminal cut-off. 2 days advance booking is required.

	Warehouse	February 3	Additional time required for container stuffing due to no full-scale operation.
	China Customs	February 3	Operation hours as normal.
	Terminal	24 hours daily operation	Operation hours as normal.
	Carrier	February 10	Booking process can be placed as per standard procedures, but more carriers are implementing blank sailings with short notice.
	Trucker	February 10	Few highway or town roads have been locked down 100% inspection ratio for truck across the provinces/towns/cities may affect reaching the cargo cut-off/terminal cut-off. 2 days advance booking is required.
	Warehouse	February 3	Working hour: 9 am- 5 pm; 1 day advance booking is required.
	China Customs	February 10	Operation hours as normal.
Ningbo	Terminal	24 hours daily operation	Running as per normal schedule. Congestion of reefer containers at the terminal and a congestion surcharge is introduced.
	Carrier	February 10	MSK/SAF/MCC resume working on March 1. Booking process as normal.
	Trucker	February 10	Government encourages trucking companies resume working asap, situation could be recovered in near future. Some highway or town roads have been locked down. 100% inspection ratio when trucks across the provinces/towns/cities may affect reaching the cargo cut-off/terminal cut-off.
	Warehouse	February 10	Working hour: 8 am- 5 pm. 1 day advance booking is required and drivers need to provide the personal moving trace in recently 15 days. Drivers & cargo from Hubei, Taizhou and Wenzhou are not allowed to be gated in.
	China Customs	February 3	The inspection ratio is high but there is not enough offices to proceed the inspections why delays are to be expected.
	Depot	February 10	50% of the depots getting the approval from government to resume working. Working time 8:00 am- 05:00pm
	Xiamen	Terminal	24 hours daily operation
Carrier		February 10	MSK/SAF/MCC resume working on March 1. Booking process as normal.
Trucker		February 10	Few highway or town roads have been locked down 100% inspection ratio for truck across the provinces/towns/cities may affect reaching the cargo cut-off/terminal cut-off. 3 days advance booking is required.
Warehouse		February 3	Working hour: 8 am- 5 pm. 1 day advance booking is required.
China Customs		February 3	Operation hours as normal.
Guangzhou	Terminal	24 hours daily operation	Operation hours as normal.
	Carrier	February 10	Booking process can be placed as per standard procedures, but more carriers are implementing blank sailings with short notice.

	Trucker	February 10	Few highway or town roads have been locked down. 100% inspection ratio for truck across the provinces/towns/cities may affect reaching the cargo cut-off/terminal cut-off. 3 days advance booking is required.
	Warehouse	February 3	Working hour: 8 am- 5 pm. 1-day advance booking is required.
	China Customs	February 3	Operation hours as normal.
Shenzhen	Terminal	24 hours daily operaton	Operation hours as normal.
	Carrier	February 10	Booking process can be placed as per standard procedures, but more carriers are implementing blank sailings with short notice.
	Trucker	February 10	Few highway or town roads have been locked down. 100% inspection ratio for truck across the provinces/towns/cities may affect reaching the cargo cut-off/terminal cut-off. 3 days advance booking is required.
	Warehouse	February 10	Not yet full-scale operation
	China Customs	February 10	Operation hours as normal.

Quarantine Request list status February 16, 2020

Country	Details
Australia	Vessels which has left the last port in China and will be sailing to Australia over the next 14 days will need to report if there are any sign of illness of the crew. If no illness is reported, the vessel will proceed as normal. If sickness is noted, Quarantine will be extended for another 14 days prior to permission to berth.
Philippine	Vessels arriving from mainland China, Hongkong and Macau will be suspended from direct-berthing privileges and have to stay at Quarantine Anchorage for 14 days before they can be boarded by a quarantine doctor. Note that the 14-days quarantine starts from the day the vessel sailed from the last port of the infected area. Crew disembarkation is strictly prohibited for any reason if the vessel has called the infected areas.
Singapore	As per guidelines from the Singapore Ministry of Health's precautionary measures will include crew members with recent travel history (within the last 14 days,) to mainland China as well as ships who previous called ports in the last 14 days included mainland China, effectively as of February 1, 2020.
USA	The Coast Guard consider it a hazardous condition under paragraph 33 CFR 160.216 if a crewmember who has been in China (excluding HK and Macau) within the past 14 days and is brought onboard the vessel during transit. This requires immediate notification to the nearest Coast Guard Captain of the Port.

Sweden	<p>The Gothenburg Port Authority is in continuous contact with infection control doctors in the Västra Götaland region.</p> <p>The request for a Declaration of Health to calling vessels is valid until further notice, with no set end date.</p> <p>If an approaching vessel states that it has an ill person on board who has been in a WHO-classified risk area, the port's quarantine plan will be activated, and infection control doctors will be contacted to make a medical assessment.</p>
Vietnam	<p>Vessels arriving from mainland China, Hongkong and Macau will be suspended from direct-berthing privileges and have to stay at Quarantine Anchorage for 14 days.</p> <p>Note that the 14-days quarantine starts from the day the vessel sailed from the last port of the infected area.</p> <p>The 14 days quarantine period will not be calculated into free time.</p>
Brazil	<p>Crew disembarkation needs to apply for Free Pratique Certificate for 2019-nCoV.</p>
Argentina	<p>Crew disembarkation needs to apply for Free Pratique Certificate for 2019-nCoV, and vessel healthy record copy within 48 hours.</p>
Kuwait	<p>Port needs vessel Captain declare 2019-nCoV free of his vessel.</p>
Malaysia	<p>Vessel arriving from mainland China, Hongkong and Macau will be suspended from direct-berthing privileges and have to stay at Quarantine Anchorage before checked by a quarantine doctor on board.</p>

Domestic Road Freight status of February 16, 2020

DOMESTIC TRUCKING: Along with factories and warehouses slowly reopen following the coronavirus outbreak, the local authorities imposed a 14 days compulsory quarantine for anyone coming from other restricted areas.

This factor leads to the short supply of trucking services, unexpected delays for pre-carriage and post-carriage as well as the increase of freightage.

Only less than 50% of normal supply is available in the market but the cross border trucking between China and Hong Kong service remains open as usual.

Province or City area	Local restriction for container truck
Xian	Vehicles and drivers with Hubei plates and IDs not allowed to enter, others need to apply for permission and subject to body temperature check.
Chengdu	Vehicles and drivers with Hubei, Chongqing, Anhui plates and IDs not allowed to enter, others subject to body temperature check.
Hefei	Vehicles with Hubei plates are not allowed to enter
Zhengzhou	Vehicles and drivers with Hubei, Chongqing, Anhui plates and IDs not allowed to enter, others subject to body temperature check.
Shanghai, Beijing	No road restriction so far, need to check body temperature at the exit point of high way before entering the city.
Jiangsu	
Changzhou downtown	For vehicles with non-Changzhou car plates need permission to enter Changzhou downtown.
Liyang city of Changzhou	Only local vehicles are allowed to enter.
Changshu	Drivers with Hubei, Zhejiang, Guangdong IDs not allowed to enter.
Kunshun of Suzhou	Drivers with Hubei, Zhejiang, Guangdong, Zhumadian, Hunan, Jiangxi, Anhui IDs not allowed to enter.
Rest of Suzhou	Drivers with Hubei, Zhejiang, Guangdong, Henan, Hunan, Jiangxi, Anhui IDs not allowed to enter.

Yizheng of Yangzhou	For vehicles with non-Yangzhou car plates need permission to enter.
Rest of Yangzhou	Drivers with Hubei, Zhejiang, Guangdong, Henan, Hunan, Jiangxi, Anhui IDs not allowed to enter.
Zhenjiang city	For vehicles with non-Zhenjiang car plates need permission to enter.
Yancheng city	Vehicles with Shanghai, Anhui car plates can enter, vehicles with Zhenjiang, Hubei car plates are not allowed, drivers need to register personal health information to apply for health certificate once exit high way to enter Jiangsu
Huaian city	Need to apply for permission to enter city
Haian of Nantong	Drivers with Chongqing, Guangdong, Hubei, Henan, Hunan, Jiangxi, Anhui IDs and car plates not allowed to enter
Haimen of Nantong	Drivers with Chongqing, Shenzhen, Guangzhou, Wenzhou, Hangzhou, Ningbo, Taizhou, Xinyang, Zhengzhou, Zhumadian, Changsha, Yueyang, Hefei, Fuyang, Nanchang IDs not allowed to enter.
Nanjing	No road restriction so far, need to check body temperature at the exit point of high way before entering the city.
Taizhou	Only local vehicles are allowed to enter.
Wuxi	Drivers with Hubei, Zhejiang, Henan, Anhui, Hunan, Jiangxi, Guangdong IDs and car plates not allowed to enter.
Lian Yun Gang city	Only local vehicles are allowed to enter.
Xuqian city	For vehicles with non-Xuqian car plates need permission to enter.
Xuzhou city	Only local vehicles are allowed to enter.
Yanbian city	Only local vehicles are allowed to enter.
Zhenjiang	
Hangzhou	For vehicles with non-Hangzhou car plates need apply for permission to enter.
Huzhou	For vehicles with non-Huzhou car plates need apply for permission to enter.

Jia Xing	Drivers with Chongqing, Guangdong, Hubei, Henan, Hunan, Jiangxi, Anhui IDs and car plates not allowed to enter.
Jin Hua	Only local vehicles are allowed to enter.
Li Shui	Only local vehicles are allowed to enter.
Ningbo	Only local vehicles are allowed to enter.
Quzhou	For vehicles with non-Quzhou car plates need apply for permission to enter.
Shao Xing	For vehicles with non-Shaoxing car plates can only take permitted route at certain periods of a day as stipulated by local government.
Tai Zhou	Need check with local traffic control police.
Wen Zhou	Only local vehicles are allowed to enter.
Zhou Shan	Zhoushan bridge remains closed, vehicles are not allowed.
Guangdong	
Guangzhou	Vehicles and drivers with Hubei, Chongqing, Anhui plates and IDs not allowed to enter, others subject to body temperature check.
Shenzhen	Vehicles and drivers with Hubei, Chongqing, Anhui plates and IDs not allowed to enter, others subject to body temperature check.
Dongguan	Vehicles and drivers with Hubei, Chongqing, Anhui plates and IDs not allowed to enter, others subject to body temperature check.
Zhong Shan	Vehicles and drivers with Hubei, Chongqing, Anhui plates and IDs not allowed to enter, others subject to body temperature check.
Zhu Hai	Vehicles and drivers with Hubei, Chongqing, Anhui plates and IDs not allowed to enter, others subject to body temperature check.
Foshan	Vehicles and drivers with Hubei, Chongqing, Anhui plates and IDs not allowed to enter, others subject to body temperature check.
Hui Zhou	Vehicles and drivers with Hubei, Chongqing, Anhui plates and IDs not allowed to enter, others subject to body temperature check.
Jiangmen	Vehicles and drivers with Hubei, Chongqing, Anhui plates and IDs not allowed to enter, others subject to body temperature check.
An Hui	
Chu Zhou	Only local vehicles are allowed to enter.

Hefei	Vehicles with Hubei plates are not allowed to enter.
Wu Hu	Only local vehicles are allowed to enter.
An Qing	Vehicles with Hubei plates are not allowed to enter.
Bengbu	Only local vehicles are allowed to enter.
Haozhou	Only local vehicles are allowed to enter.
Chi Zhou	Only local vehicles are allowed to enter.
Fu Yang	Only local vehicles are allowed to enter.
Huaibei	Only local vehicles are allowed to enter.
Huainan	Only local vehicles are allowed to enter.
Huang Shan	Only local vehicles are allowed to enter.
Liu An	Only local vehicles are allowed to enter.
Xu Zhou	Only local vehicles are allowed to enter.
Xuan Cheng	Only local vehicles are allowed to enter.
Hebei & Henan	
Lang Fang	No road restriction so far.
Xing Tai	No road restriction so far.
Zhou Kou, He Nan	Only local vehicles are allowed to enter.
Fujian	
Xia Men	No road restriction so far.
Nan Ping	No road restriction so far.
Ning De	No road restriction so far.
Quanzhou	No road restriction so far.

Shandong	
Bing Zhou	Non-local vehicles need permission to enter.
Dong Ying	Only local vehicles are allowed to enter.
Hezhe	Vehicles with Shan Dong plates allowed to enter with permission, non-Shan Dong vehicles need to apply for permission to enter.
Lin Yi	Vehicles with Shan Dong plates allowed to enter with permission, non-Shan Dong vehicles not allowed to enter.
Qingdao	Only local vehicles are allowed to enter.
Tai An	Non-local vehicles are allowed to enter by applying for permission.
Wei Hai	Non-local vehicles are allowed to enter by applying for permission.
Wei Fang	Non-local vehicles are allowed to enter by applying for permission,
Remarks: above information is for reference only, subject to final explanation from local government, please ask your trucker to check with local government.	

Rail Freight status as of February 16, 2020

The rail freight service between China and Europe is gradually picking up this week. Some rail freight gateways resume departures on westbound and eastbound this week with less frequency than normal schedules.

Westbound:

POL	POD	ETD	Remarks
Hefei	Neuss	February 20 & 27	Departures as planned.
Hefei	Hamburg	February 26	Departure as planned.
Chengdu	Hamburg/Duisburg/Budapest/Milano	February 22, 24 & 29	ETD February15 train postponed to February 22, all other trains estimated to depart as planned.
Chengdu	Lodz	Tue/Wed/Thu/Fri (Refer CDIRS timetable)	All trains after 17th departures unchanged.
Chengdu	Tilburg	Wed/Fri (Refer CDIRS timetable)	All trains after 17th departures unchanged.
Chengdu	Nuremburg	Thu (Refer CDIRS timetable)	All trains after 17th departures unchanged.
Xian	Mala/Hamburg/Duisburg	Mon/Wed/Thu/Fri/Sun	All trains after 17th departures unchanged.
Xian	Budapest	Mon/Wed/Thu/Fri	All trains after 17th departures unchanged.
Xian	Neuss	February 20 & 27	Depart as planned, no impact.
Xian	Istanbul	February 19 & 26	19th and 26th trains will depart as planned.
Xian	Sławków/Prague/Ludwigshafen/Budapest	TBC	Postponed, specific dates to be confirmed.
Xiamen	Mala/Hamburg/Duisburg	February 19, 22, 26, 29	All trains after 19th departures unchanged.
Chongqing	Mala/Hamburg	Wed/Fri	All trains after 17th departures unchanged.
Chongqing	Duisburg	Thu/Sun	All trains after 17th departures unchanged.
Zhengzhou	Hamburg	Tue/Wed/Fri	All trains suspended till end of February, earliest resume date is beginning of March.

Zhengzhou	Mala/Warsaw	Tue/Wed/Fri	All trains suspended till end of February, earliest resume date is beginning of March.
Zhengzhou	Liege	Thu	All trains suspended till end of February, earliest resume date is beginning of March.
Zhengzhou	Munich	Sat	All trains suspended till end of February, earliest resume date is beginning of March.
Zhengzhou	Brest	Thu/Sat	All trains suspended till end of February, earliest resume date is beginning of March.
Zhengzhou	Milano	Thu	All trains suspended till end of February, earliest resume date is beginning of March
Wuhan	Mala/Duisburg	Wed/Thu/Fri/Sat	All trains suspended till end of February, resume date to be confirmed.
Wuhan	Hamburg	Wed/Fri/Sat	All trains suspended till end of February, resume date to be confirmed.
Wuhan	Lyon/London	Thu/Fri	All trains suspended till end of February, resume date to be confirmed.
Wuhan	Budapest/Prague/Ceska/Vienna/Bratislava/Salzburg	Sat	All trains suspended till end of February, resume date to be confirmed.
Wuhan	Antwerp	Fri	All trains suspended till end of February, resume date to be confirmed.
Wuhan	Madrid	Wed/Thu	All trains suspended till end of February, resume date to be confirmed.
ShiLong	Vorsino (ManZhouLi border)	February 28 & 29	Space is tight, please inquire case by case.
DaLang	Vorsino (ManZhouLi border)	February 21 & 28	Space is tight, please inquire case by case.
ChongQing	Vorsino(Manzhouli border)	February 15, 20, 27 & 29	Depart as planned, no impact.
YiWu	Vorsino/Duisburg/Hamburg/Madrid	N/A	Feb schedules cancelled, probably will only resume service beginning of March.
NanChang	Vorsino/Minsk (Manzhouli border)	February 17 (Mon/Thu)	Space is tight, please inquire case by case.
NanJing	Vorsino (Manzhouli border)	February 23	Space is tight, please inquire case by case.
GanZhou	Vorsino (Manzhouli)	Thursday	The first train of February is February 27 (Just Plan).

TaiYuan	Vorsino/Minsk(Manzhouli)	Tue (February 18 & 25)	Space is tight please inquire case by case.
XiAn	Vorsino/Minsk (Manzhouli)	February 19/Sat (February 22 & 29)	Space is tight, please inquire case by case.
ZhengZhou	Vorsino	After February 19	The schedule will be postponed to depart after February 19.
SuZhou	Vorsino (Erlian border)	Fri (February 21 & 28)	The schedule will be postponed.
YanTai	Vorsino (Manzhouli border)	N/A	February schedules cancelled, probably will only resume service beginning of March.
YiWu	Mala/Duisburg/Madrid	February 22 & 29	ETD February 15 cancelled, others as planned.

Eastbound schedule

POL	POD	ETD	Remarks
Hamburg	Hefei	February 21 & 28	ETD February 21 train cancelled, 28 train postponed to March 6.
Neuss	Hefei	February 22 & 29	ETD February 22 train cancelled, 29th train estimated to depart as planned.
Lodz	Chengdu	Wed/Thu (Refer CDIRS timetable)	Departures as planned, no impact.
Tilburg	Chengdu	Sat/Sun (Refer CDIRS timetable)	Departures as planned, no impact.
Nuremburg	Chengdu	Fri (Refer CDIRS timetable)	Departures as planned, no impact.
Mala/Hamburg/Duisburg	Xian	Wed/Fri as of February 22	Departures as planned, no impact.
Hamburg	Zhengzhou	Tue/Wed/Fri/Sat	All trains suspended till end of February, earliest resume date is beginning of March.
Munich	Zhengzhou	Wed	All trains suspended till end of February, earliest resume date is beginning of March.
Liege/Brest/Antwerp/Milano	Zhengzhou	Thu	All trains suspended till end of February, earliest resume date is beginning of March.
Poznan	Zhengzhou	Tue/Fri/Sat	All trains suspended till end of February, earliest resume date is beginning of March.

Mala/Hamburg/Duisburg	Wuhan	Wed/Sun	All trains suspended till end of February, resume date to be confirmed.
Mala/Duisburg/Madrid	Yiwu	February 26	Departure as planned, no impact.